

**COLDWELL
BANKER**

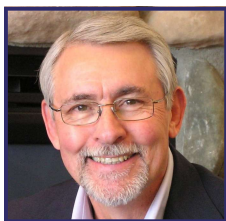
1st CHOICE REALTY

18401 E. Highway 24, Ste. 100
Woodland Park, CO 80863

*Each Office is Independently
Owned and Operated*

Vol. 5 Issue 1 February, 2010

The Marshall-Martinek Team



**David
Martinek**

**Colorado
Realtor**

Equal Housing
Opportunity



Contact information:

Direct Phone: 719.687.1516
Toll Free: 800.905.3811
Fax: 719.687.0488
Cell: 913.707.7547

Web:
www.davidmartinekcbb.com

[davidmartinek@
1stchoicerealtycb.com](mailto:davidmartinek@1stchoicerealtycb.com)

dmartinekhomes@gmail.com

Copyright 2010 by David Martinek. All rights reserved.

entrance, at the base of which rested a banister-railed veranda and porch. Inside was a graceful lobby, a large dining room, two kitchens and two parlors for sitting. A spiral staircase (housed by the tall exterior spire) led to 42 guest rooms upstairs on two levels. It had electricity and indoor plumbing. Outside on the veranda one can imagine rocking chairs and benches lining the decks for guests to enjoy the mountain air.

"It stood on a hill at the west end of town," says local historical documents. "Woodland Park's championship baseball team played every Sunday on the diamond near the hotel, attracting quite a crowd from the (Colorado) Springs that came up on the train for the games." The hotel was a prominent feature in young Woodland Park, attracting visitors and competing handsomely with the smaller Crest and Midland hotels down the hill closer to the railroad depot.

Despite our romantic look back, like so many businesses of that era, the Woodland Hotel was never a financial success. Its ownership changed hands a couple of times until it was finally closed and abandoned in 1904, remaining empty for about a decade. During that time it was frequently vandalized and became the haven for tramps from the railroad. But the hotel lived again for approximately 20 more years. It was re-opened in 1914 and reopened as a tuberculosis sanitarium until the late 1930s.

According to the Teller County Planning Department's "history of Woodland Park," the Woodland Hotel burned in 1930. But an article in the Colorado Springs Gazette Telegraph, dated September 21, 1939, says the Woodland Park Hotel was to be torn down and reduced to a pile of lumber to make room for a cottage camp to be built by Topeka, Kansas interests. It's likely that both stories are true – the hotel burning earlier only to be completely razed some years later.

Ralph Ellison wrote that "the end is in the beginning and lies far ahead." (From *The Invisible Man*) In those words the truth rings clearly, meaning that everything that has come before is destined to give way to modern times. And like so many other "things before," the Woodland Hotel is now just a community memory, etched in our subconscious and fading all the more with each passing generation.

DM

Sources: Colorado Springs Gazette Telegraph; US Gen Web Archives, Teller County History, Woodland Park Names.

See past issues of Pikes Peak Country at www.davidmartinekcbb.com

Pikes Peak Country



Pikes Peak - Photo by Dave Martinek

The Woodland Hotel

Old buildings hold a special fascination for me. It's not so much the weathered timbers or the creaking floors that are the attraction, nor the dusty banisters leading up the stairs to a hallway filled with peeling wallpaper and crumbling plaster. No, it's the silent voices of all the people who passed through those aging doors that I imagine most. I wonder, for instance, who may have lived in the building in days past when the wood was fresh with paint. Or, if it was a business or a hotel, what prompted their visit from afar. What must their lives have been like a hundred or so years ago, and what motives brought them to this place? "If walls could talk..."

The walls of the Woodland Hotel can't talk anymore. They've been gone for nearly 75 years – torn down in the late 1930s. Today, in the spot where it once stood on the western edge of Woodland Park sits the very fine County Lodge, a one-story rambling hotel complete with a free Continental breakfast, cable TV, wireless internet and an indoor pool. Compared to the spiraling stairs, verandas and gabled exterior of the Woodland Hotel of the 1890s (see picture), the County Lodge is a modern place holder.

John Anisfield came to Colorado in the 1880s from Cleveland and by 1890 owned a portion of what would soon be chartered as Woodland Park. He built and opened the Woodland Hotel in 1892, overlooking the Colorado Midland railroad tracks and a great, unobstructed view of Pikes Peak.

It was an elegant structure, rivaling the magnificent hotels down Ute Pass in Cascade, Ute Park and Green Mountain Falls. Its numerous shingled gables and white-washed wooden siding was anchored by a tall circular spire above the front entrance,



The Woodland Hotel (1892 - 1939), built by John Anisfield from Cleveland, Ohio. It stood on the western end of town near where the County Lodge now sits. 42 guest rooms made it the largest hotel in Woodland Park at the time. In 1914 it reopened as a TB Sanitarium.

February 2010

To view more properties, go to my website: www.davidmartinekc.com/properties

Dave's Buyers' Guide

Cabins, second-homes and land specials from Coldwell Banker 1st Choice Realty →

Prices and status effective as of January 29, 2010

To inquire, email or call 719.687.1516

(Marshall-Martinek Team listings are BOXED)



\$139,900

60 E. Aspen Drive, Divide Rancher. Remodeled rancher, inside and out. 3BR/2BA, 1309 S.F. on .44 acres, including an adjoining lot. New carpet, plumbing, wood stove and roof. Fenced w/ outbuildings. Quiet cul-de-sac in Sherwood Forest. Ideal for a permanent residence or vacation getaway. **VERY UNIQUE! FOR SALE**



\$285,900

201 Galena Ave, Cripple Creek Historic Cripple Creek. Remodeled with lots of space, bedrooms & charm. 5BR/4BA/2GAR, 2980 S.F. Sits on .65 acres above the city. New oak floors, fireplace, oak kitchen cabinets and stainless appliances. Built-in walk-in safe. Perfect home for a family. Come and see this jewel today. #658203



\$139,900

192 Silbani, Divide Like New! A well-maintained manufactured home with 3 BR/2 BA on 0.7 acres. 1736 SF. Features a new deck and improved excavation in front. Erected in 2004; corner lot in nicely treed Arabian Acres. **FINANCING IS AVAILABLE!** Great as a vacation home or a permanent residence. Call on this one before it's too late! #559973



\$337,850

1909 Rampart Range, Woodland Pk A Mountain Home. 4.65 spectacular acres borders National Forest. Privacy but close to town. 4BR/2BA/2GAR, 3527 S.F. Warm inside; T&G ceiling, Brazilian granite countertops in kitchen. Loft office area. Come and take a look. #587976



\$259,850

974 S. Blue Spruce, Woodland Pk No Covenants. Zoned for 1 horse. 3BR/3BA/2GAR, 2144 S.F. One full acre in town with privacy. A rare parcel in WP. RV parking, a workshop and more. Solar passive windows; Rinnai hot water heater. Sun room and walk-out MBR. #547191



\$16,000

2856 Blue Mesa Dr., Divide Lake Front. This heavily treed lot in Highland Lakes (1.67 acres) slopes down to Beaver Lake No. 2. Strategic tree cuts will make room for a driveway and a building site. See this beautiful lot. #457747



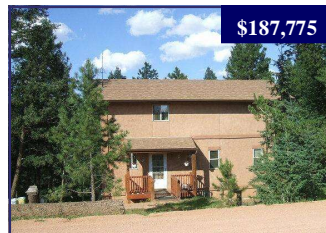
\$24,900

2847 N. Mountain Est, Florissant Double Lot. A 1.18 acre double lot; several building sites. Lot of mature pines and aspens. Pikes Peak and Sangres views. Close to Dome Rock. Two miles in CME. Don't miss it. #635122



\$319,900

303 Valley View Dr., Divide Very Clean. 2.04 acres in Grandview Est. 4BR/3BA/4GAR, 3288 S.F. House has it all. Fenced for horses and dogs. Great view of Pikes Peak. End of cul-de-sac for privacy. Put all your cars in the huge garage. #602698



\$187,775

1795 N. Mtn. Est. Rd., Florissant Radiant Heat. 3BR/2BA/1GAR; 1742 S.F. on .55 acres. Close to Teller 1 in Colorado Mtn Est. Radiant heat on 3 levels. Quite neighborhood. Cozy and comfortable; open and airy concept. Enjoy this home in the mountains! #562875



\$19,000

0 Commanche Trail, Florissant Mountain Top. The views from the top (where the lot is) are outstanding. Rock formations dominate this 2.3 acre lot in Valley Hi Mountain Estates. No legal access: sold as a "recreational" lot only #470091



\$34,900

127 Carlton, Florissant Dream Site. A 2.04 acre lot for a dream home. End of cul-de-sac sloping towards CME valley. Very picturesque. All utilities, perk test, fire mitigated. Building plans available. Come and see. #676197



\$293,650

6740 Boulder St. GMF Look Down the Pass! 300 feet from Nat'l Forest; 600 feet from a waterfall. Custom home features gourmet kitchen, private decks, great views. Lots of windows and skylights. 4BR/2BA, 3223 S.F. A dream home. #686697



\$154,850

912 Lorraine Ave, Woodland Pk Completely Remodeled. Very cute one-level living home in WP. Every thing is brand new. Vaulted beam ceilings in LR, wood stove, granite countertops. MBR walks out to patio. Conveniently located within walking distance to town. #613767



\$24,900

86 High Chateau, Florissant Beautiful Land. Two acres overlooking some trees and a great view of Pikes Peak. Easy access from High Chateau Road; utilities at the property line. Level building sites. Here's the place. #433314

Copyright Notice: This newsletter is copyrighted by David Martinek or the original sources, including all text, photos and opinions. No information may be reproduced, copied or used without the expressed, written permission of David Martinek or the Pikes Peak Association of Realtors, whichever applies. For permission, see mailing address and email below:

David Martinek, P.O. Box 1088, Divide, CO 80814
davidmartinek@1stchoicerealtycb.com